

# NEWTON HOUSE

CAMBRIDGE  
BUSINESS PARK  
CB4 0XB

THE CROWN  
ESTATE

CAMBRIDGE  
BUSINESS PARK

5,967 sq ft (554.3 sq m)



## The premier business park in Cambridge

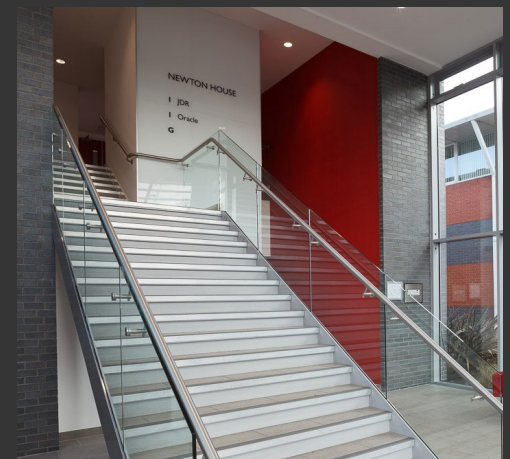
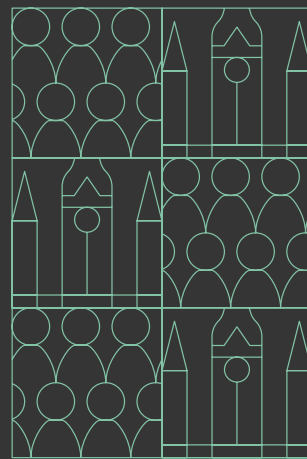
Newton House is an imposing two storey building commanding a key position on Cambridge Business Park.

The suite is located on the first floor and is accessed via an impressive double height glazed entrance area with passenger lift. The office benefits from suspended ceilings, raised flooring, dedicated WC and a communal reception area. The office will be refurbished to provide Grade A office specification.

Walking distance to Cambridge North railway station and Guided Busway

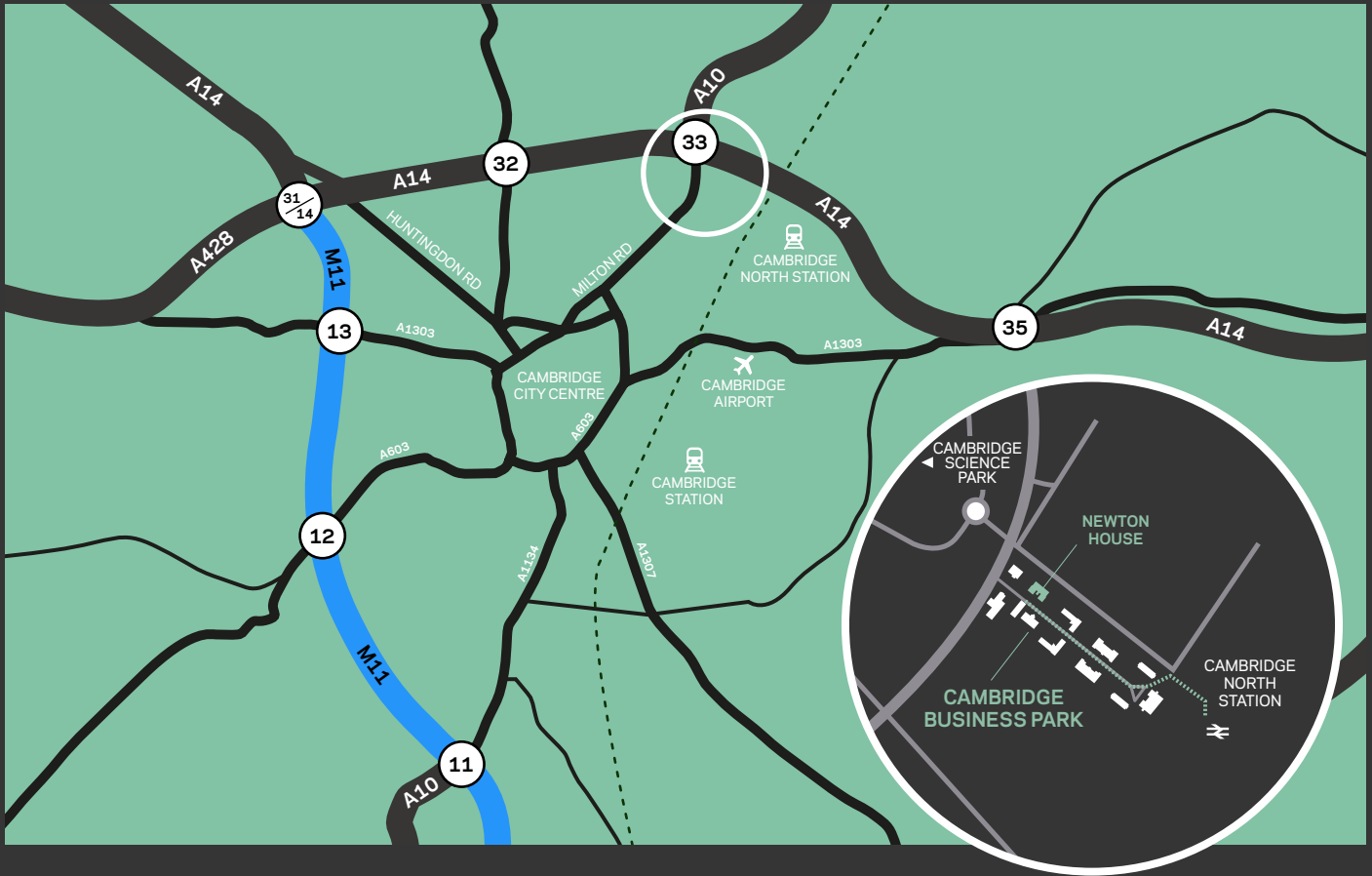
21 on-site allocated car parking spaces

24/7 on-site security



## Location

Cambridge Business Park is located north east of Cambridge city centre easily accessible from the A14 dual carriageway. The A14, in turn connects with the M11 and A1 to with London just 55 miles away. Cambridge North railway station is situated immediately adjacent to the Business Park within circa 0.75 miles walk, with train services from the station to London Kings Cross, Liverpool Street, Norwich and Kings Lynn, as well as connecting to national rail networks. There is private pedestrian access from the train station for occupiers of Cambridge Business Park. Occupiers on the park include Ernst & Young, BBC, Mathworks, Redgate, Microfocus, Price Bailey, OneSpatial and Qualcomm.



NEWTON HOUSE, COWLEY PARK, CAMBRIDGE, CB4 0XB

## Accommodation

Area	Size
Part first floor	5,967 sq ft (554.33 sq m)

## Lease Terms

The property is available by way of a new effective full repairing and insuring lease on terms to be agreed. A new lease shall be excluded from the Landlord & Tenant Act 1954 Security of Tenure & Compensation provisions.

## Rent

Rent on application.

## Service Charge

There is a service charge payable for the common parts. Please contact the agents for more information.

## Rateable Value

Rateable Value:	£120,000
Rates Payable (2020/21):	£61,440

Interested parties are advised to confirm the accuracy of the above figure by contacting the Local Authority directly.

## EPC

The suite has an EPC rating of C(74). Please contact the agents for a copy.

## Legal Costs

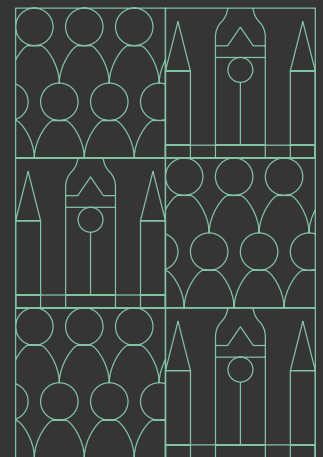
Each party to be responsible for the payment of their own legal costs.

## VAT

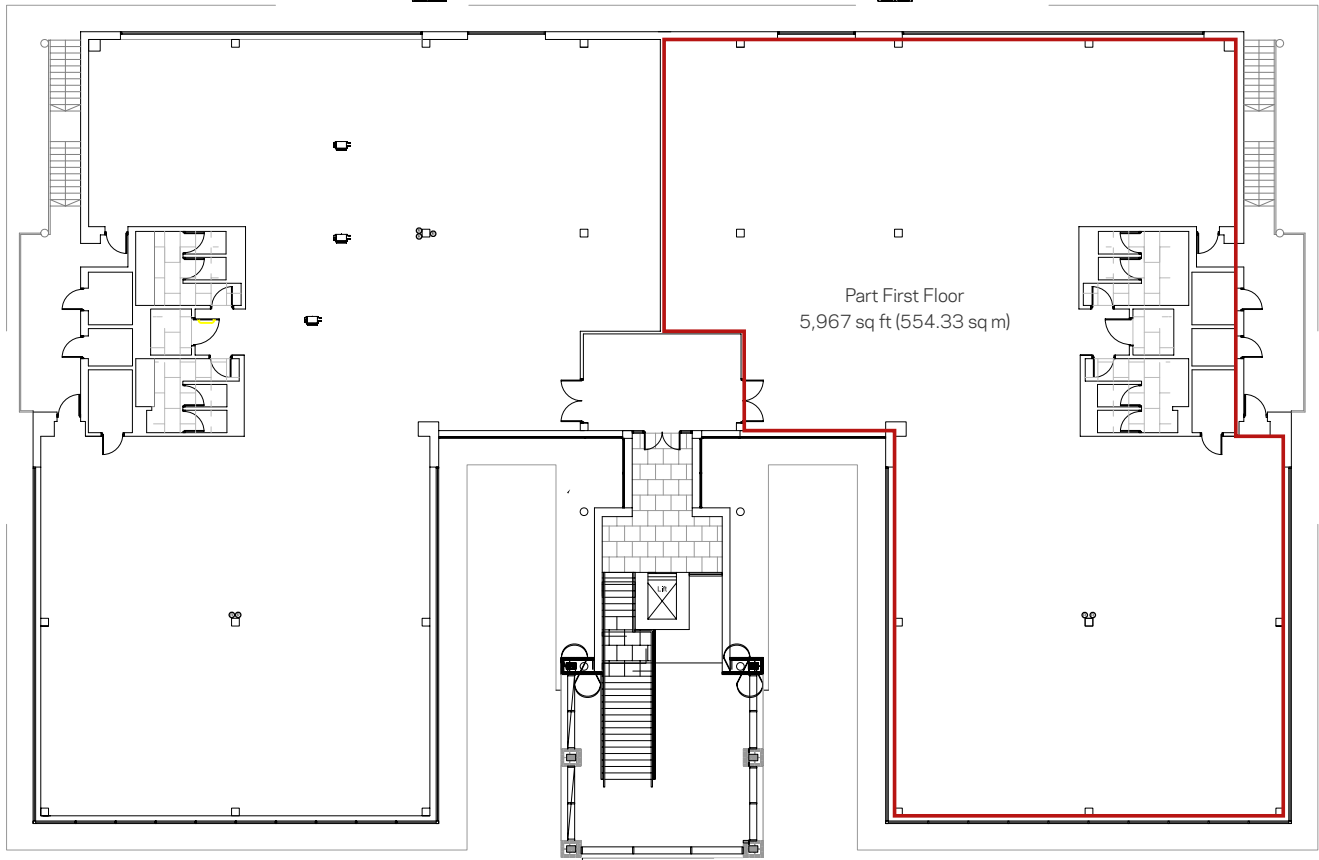
All figures quoted are exclusive of VAT.

## Viewings

Strictly by appointment only with agents Savills or Carter Jonas.



## FIRST FLOOR



### For further information contact



#### William Clarke

+44 (0) 1223 347 294  
+44 (0) 7967 555 497  
wclarke@savills.com

#### Rupert Dando

+44 (0) 1223 347 037  
+44 (0) 7813 624 276  
rupert.dando@savills.com

### Carter Jonas

#### Sebastian Denby

+44 (0) 1223 346 640  
+44 (0) 7788 364 635  
sebastian.denby@carterjonas.co.uk

#### Charles Clark

+44 (0) 1223 326828  
+44 (0) 7780 667063  
Charles.Clark@carterjonas.co.uk

### Important Notice

Savills and Carter Jonas for themselves and for The Crown Estate, whose agents they are, give notice that: 1) these particulars are indicative only and are set out as a general outline for information purposes only of intending purchasers, tenants or third parties and do not constitute, nor constitute part of, an offer or contract; 2) all descriptions, dimensions, measurements, distances, references to condition and necessary permissions for use and occupation and other details are approximate and are believed to be correct, but are given without any responsibility and any intending purchaser, tenant or third party should not rely on them as statements or representations of fact and must satisfy themselves by inspection or otherwise as to the correctness of each of them; 3) the text, any photographs and plans are for guidance only and are not necessarily comprehensive, and any images only represent part of the property as it appeared at the time they were taken; 4) it should not be assumed that the property has all necessary planning, building regulation or other consents and Savills and Carter Jonas have not tested any services, equipment or facilities; 5) no person in the employment of either Savills and Carter Jonas or The Crown Estate's other consultants has any authority to make or give any representations or warranty whatever in relation to the property or these particulars, nor enter into any contract relating to the property on behalf of Savills and Carter Jonas, The Crown Estate or otherwise; 6) no responsibility can be accepted for any expenses incurred by intending purchasers, tenants or third parties in inspecting parts of the property which have been sold, let or withdrawn; and 7) unless otherwise stated, all prices and rents are quoted exclusive of VAT. **June 2021**